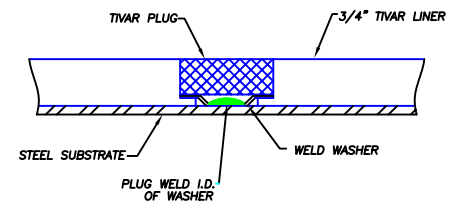


PANEL LAYOUT



FASTENER DETAIL

<b>POLY HI SOLIDUR</b> A MENASHA SUBSIDIARY <b>SYSTEM LINER</b>	
<b>REVISIONS</b> NO.    REVISION    DATE	<b>TECHNICAL SPECIFICATIONS</b> SYSTEM LINER THICKNESS: 3/4" (19mm) WEIGHT: 2.50 kg/m <sup>2</sup> TENSILE STRENGTH: 2.0 MPa ELONGATION AT BREAK: 2.5% TENSILE MODULUS: 100 MPa
<b>MANUFACTURER</b> ASTRALLOY 1000, 1000 TEL: 02-885-8888 FAX: 02-885-8888	<b>PROJECT INFORMATION</b> PROJECT NO.: SHEET NO.: SHEET TOTAL: