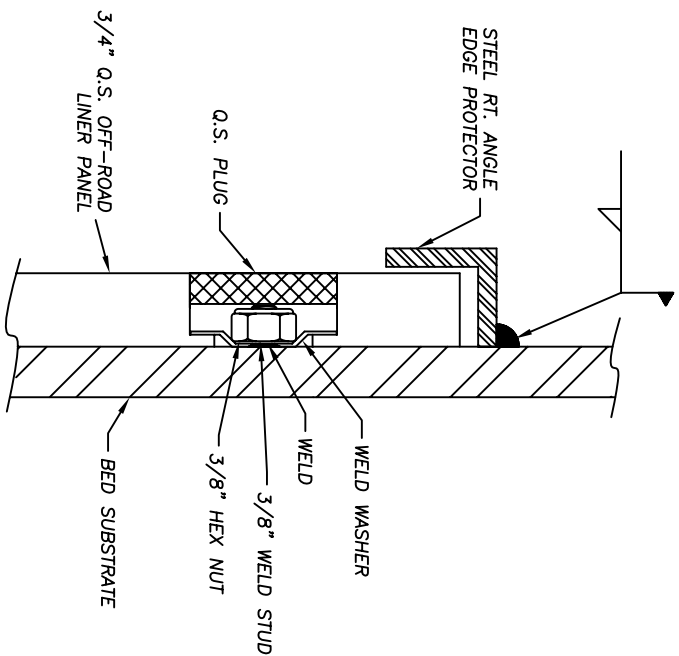
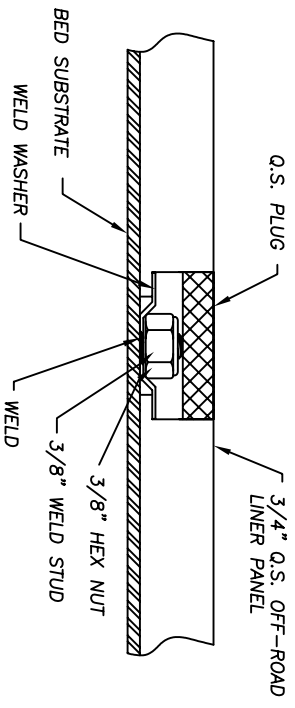


BILL OF MATERIALS			
PART	QTY	SIZE	DESCRIPTION
PART 1	1	3/4" THICK	Q.S. OFFROAD LINER PANEL
PART 2	1	3/4" THICK	Q.S. OFFROAD LINER PANEL
PART 3	1	3/4" THICK	Q.S. OFFROAD LINER PANEL
PART 4	1	3/4" THICK	Q.S. OFFROAD LINER PANEL
PART 5	1	3/4" THICK	Q.S. OFFROAD LINER PANEL
PART 6	1	3/4" THICK	Q.S. OFFROAD LINER PANEL
PART 7	1	3/4" THICK	Q.S. OFFROAD LINER PANEL
PART 8	1	3/4" THICK	Q.S. OFFROAD LINER PANEL
PART 9	1	3/4" THICK	Q.S. OFFROAD LINER PANEL
163982	4		LEADING EDGE PROTECTOR
F6026	275		Q.S. PLUG
0 Uf160	275		3/8" WELD STUD
	275		SUPPLIED BY CUSTOMER
	275		SUPPLIED BY CUSTOMER
			3/8" NUT



**LEADING EDGE PROTECTOR**



**FASTENER DETAIL**

No.	REVISION	BY	DATE

▲ DENOTES CRITICAL DIMENSION  
 ○ DENOTES DESIGN CHANGE

**TOLERANCES**

FRACTION ± 1/16"  
 DECIMAL .XX ± .063  
 DECIMAL .XXX ± .031  
 ANGULAR ± 1/2°  
 TOLERANCES TO BE AS SHOWN UNLESS OTHERWISE SPECIFIED

UNITS	MATERIAL
Inches	Quicksilver
M.T.S.	

**POLY HI SOLIDUR**

A MENASHA SUBSIDIARY

**POLY HI SOLIDUR SYSTEM TOWER**

TURNKEY SOLUTIONS

THIS DRAWING AND THE INFORMATION CONTAINED THEREIN ARE OUR PROPERTY AND MAY BE USED BY OTHERS ONLY AS AUTHORIZED BY US.  
 © ALL RIGHTS RESERVED

Poly Hi Solidur, Inc.  
 2710 American Way  
 Fort Wayne, Indiana 46809  
 Phone 219-479-4100  
 Fax 219-478-1074

Poly Hi Solidur - Quicksilver Group  
 For Rick Weathers

DATE 03/29/2005

SHEET 2 OF 2

SAP ORDER NO.

DRAWING NO. QS12

CONCEPT DRAWING

DWG SIZE/REVISION

A 0

FILED AS: G:\HOPPER\DWGS\QUICKSILVER\QS12.DWG